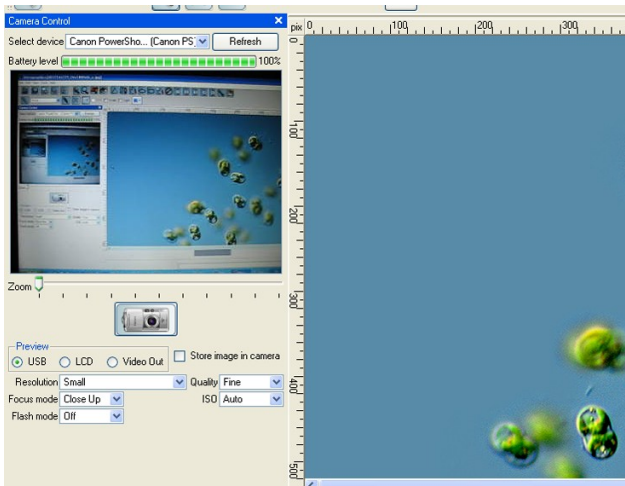


Image and video acquisition

Works with your camera!



- **Image and video capture from virtual any kind of source (camera, scanner, video device) WDM devices (USB and Firewire cameras, DV camcorders, video frame grabbers etc.), Nikon lab cameras (U1, U2, DS1-QM), DeltaPix cameras (Invenio3S, Invenio5S, Invenio5D). Canon compact and SLR photo cameras, Nikon compact photo cameras („Coolpix“ models), Olympus compact photo cameras (“Cammedia” models).**
Other cameras and devices can be easily supported by adding new plug-in drivers.

- **Remote control of the device**

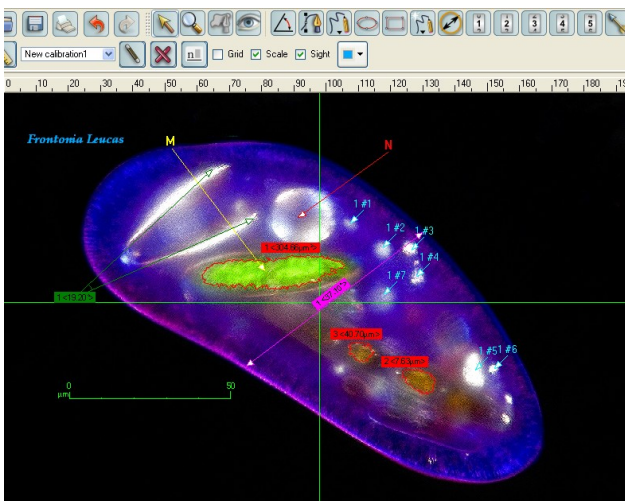
Digital photo cameras: ISO mode, lamp mode, focus mode, zoom, resolution, remote release, image transfer and download.

Native live view from photo cameras supported.

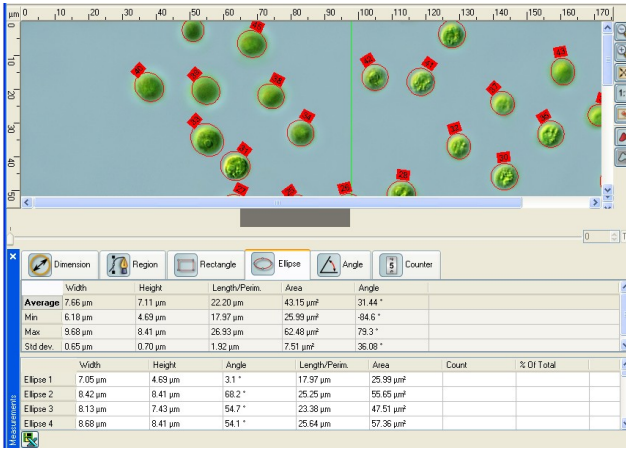
Video devices: Live view (playout), AVI recording, resolution, frame rate, video compression and other properties depending on the manufacturer's driver.

Annotations & measurements

Does what you expect and more!



- **Easy calibration with different measurement units.**
Up to 20 calibrations can be defined and stored. Movable unit ruler, cross sight, movable and resizable unit grid on screen.
- **Measurements and annotations (also on live video) with many objects available:**
Ellipse, rectangle, arrow, text, dimension, angle, Bezier curve region, freehand region, counter, mask.
Values measured include width, height, area, diameter, length, angle, ferret lengths etc. Objects are fully editable and can show any measured value live on screen.

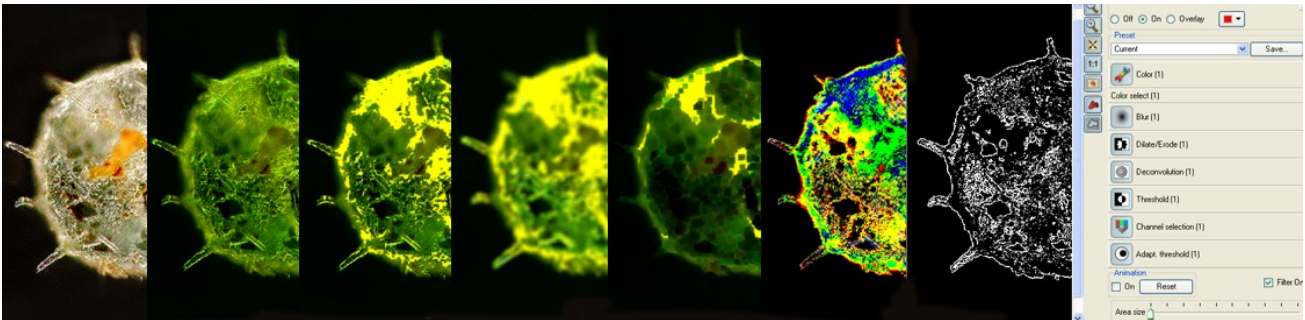


- **Statistics table**
Shows (live) all measured values for all objects. Additional sub-table shows values by object category including maximum, minimum, mean and standard deviation. Values can be exported to Excel table.
- **Auto tracing and object auto detection feature**
- **Saving/loading images and video**
Media are kept together with its metadata (measurement/annotation objects, calibrations, filters) in one file. Many file formats supported (jpg, png, mng, bmp, tiff, jp2, mpg).

Image processing

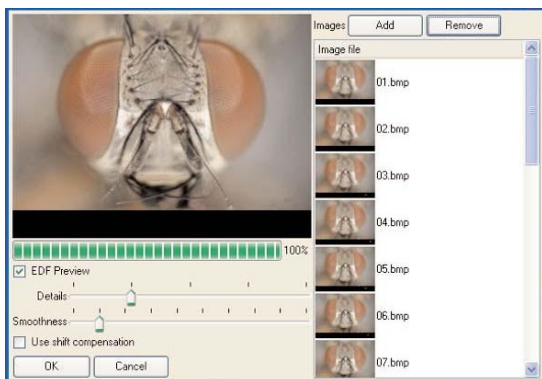
Flexible, fully editable image processing layers!

- **Filtering layers**
Every image filter acts as a processing layer. Resulting image (segmented, colour corrected etc.) is displayed as a preview or as an overlay on top of the original image. The original image remains untouched. Processing layers can be added, removed, change its order, switched on/off and adjusted.
- **Available image filters**
Colour correction, colour selection, channel separation, blur, deconvolution, thresholding, morphology etc. Filters can be arranged in predefined sets, saved and restored.



Other features

It offers you even more!



- **Extended depth of focus (EDF)**
- **Easy to extend, plug-in architecture**
- **Template based RichText/HTML report generation.**
- **Intuitive user interface. Unlimited undo/redo**